



HiTi!

HiTi Photo Printer 640DL

Superior Printout Quality, High Performance for Professionals

An Excellent Digital Printing Partner for Photo Centers

Professional Digital Mini-Lab - *Just for you*



HiTi Photo Printer 640DL

Superior Printout Quality, High Performance for Professionals.



D2T2 403dpi True Color Continuous-Tone Printing

By using Dye Diffusion Thermal Transfer (D2T2) technology, HiTi Photo Printer 640DL is designed for those who take the precision and quality of the image as the prime consideration. Thermal Print Head heat the ribbon panels that are coated with dyes in yellow, magenta and cyan. The heat process diffuses the dye into a thin receiving layer on top of the paper. A protective coating is then layered down on top of the paper to protect the color against water and ultraviolet and to prevent it from fading.



Heavy-Duty 4" x 6" Borderless Printing

640DL offers 30 sheets continuous printing in 4" x 6" borderless print size creates high production rate without extra labor works.



Automatic Temperature and Humidity Detection

HiTi Photo Printer 640DL features with auto-detection of temperature and humidity. This built-in temperature and humidity sensor can auto-detect the working temperature and humidity and adjust the best printing mode to fit different printing environments in order to provide consistent photo quality outputs.



Economical Printing Capacity up to 100 Prints

Different paper cassettes allow users to swap easily for various output necessities such as 4" x 6" photo, different types of stickers, and so on. The 100 sheets capacity is perfect for commercial use.



Parallel Printing (Up to 8 Printers)

HiTi Photo Printer 640DL allows multi-printer connections through USB port. One PC connects maximum of 8 printers to satisfy high duty outputs, and associate with various outputs quickly.



Fuzzy Printing Media Management

Whenever the image type and consumable type are inconsistent, the driver will popup a warning message to alert users selecting the correct media; on the other hand, auto searching function of consumable type is implemented in parallel printings.



Magic Coating Technology

Magic coating technology keeps your photo prints brilliant with waterproof and UV protection. It's never been easier to create personal "watermarks" with protective coatings. Users may pick their favorite designs to screen on their photos. Protection against fingerprints, UV radiation and moisture.



Smart LED Messenger

Smart LED Messenger performs ultra guiding of the printer status. HiTi Photo Printer 640DL features 3 LED lights that represent low paper loads in orange, error message in red and power on in green.



Versatil Printout

Personal
Identification Photo



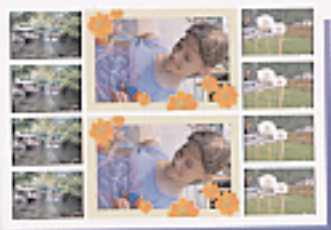
Greeting Card



Index Printing



Sticker



Calendar



picture



▲ HiTi Photo Printer 640DL

Valued Bundle Software

HiTi PhotoDésirée Mini-Lab Edition

Designed to satisfy different customers' needs, PhotoDésirée allows users to enhance and modify images with auto setting and further enhanced by professional designing mode including contrast, brightness, hue, saturation, gamma curve, shadow, emboss... etc.

ImagEnhancer



Customer Database Management System



Convenient Billing System



Professional Digital Mini-Lab - *Just for you*

Specifications:

Model Name	HiTi Photo Printer 640DL
Printing Method	4-pass Dye Diffusion Thermal Transfer continuous tone printing
Gradations	256 levels per Yellow, Magenta, Cyan color, total 16.7 million true colors
Resolution	403dpi x 403dpi*
Printing Size	4 in. x 6 in. (100 mm x 152 mm)
Paper Size	4 in. x 7 in. (101.6mm x 178mm), with detachable boundary
Paper Capacity	100 sheets
Cartridge Type	YMCO (Y: Yellow M: Magenta C: Cyan O: Overcoat)
Printing Speed	Approx. 70 sec. per sheet (excluding data transmission time)
Computer Interface	USB 1.1
System Requirements	Windows 98/ME/2000/XP, 128MB RAM, 100MB HDD, USB Port and Pentium PC

Power Requirements	100V-240V AC, 50/60Hz
Operating Temperature	10°-35°C (50°- 95°F)
Operating Humidity	20-85%
Dimensions (WxHxD mm)	264(W) x 144.4(H) x 355(L)
Weight	8kg
Certification	UL, TUV, FCC, CE, BSMI, CCEE, C-Tick, GS, VCCI
Accessories Included	Paper Cassette, USB cable, CD-ROM (with printer drivers, bundle software and electronic manual), AC power cord, manual, quick guide
Optional Consumables	640DL consumable kit: (YMCO Ribbon and Papers for 100 prints) a. Photo papers b. 4x4 Stickers c. 4/2/4 Stickers d. 1X1 Stickers

* equal to 6403dpi

Mechanism Instructions:

The front

◆ Release Button

◆ Paper Outlet

◆ Paper Cassette



◆ LED Messenger

The back

◆ USB connection port

◆ Power Cord Connection

◆ Power Switch



Accessories and Consumables: (The kits all include ribbon and photo paper/sticker)



Photo papers Kit
4" X 6"
100 prints



4x4 Stickers Kit
4" X 6"
100 prints



4/2/4 Stickers Kit
4" X 6"
100 prints



1X1 Stickers Kit
4" X 6"
100 prints



Paper Cassette:
a. Photo papers b. 1X1 Stickers
c. 4x4 Stickers d. 4/2/4 Stickers



Hi-Touch Imaging Technologies

3F, No.31, Shuang-Shih Rd. Sec.3, Pan-Chiao
City, Taipei County 220, Taiwan
Tel: +886-2-82583060 Fax: +886-2-82583062
<http://www.hi-ti.com> e-mail: sales@hi-ti.com

Distributed by

TradeHype

T 030-2148216 www.tradehype.com
F 030-2148074 sales@tradehype.com

Postbus 2093, 3500 GB Utrecht

Specifications are subject to change without prior notice. All trademarks and brand names are properties of their respective companies. All rights reserved.
Copyright 2002 (April 30, 2001). Printed in Taiwan, P/N: 200204DL-E1